

# Pillow with Ruffled Inset Panel

By Susan W. Schurz

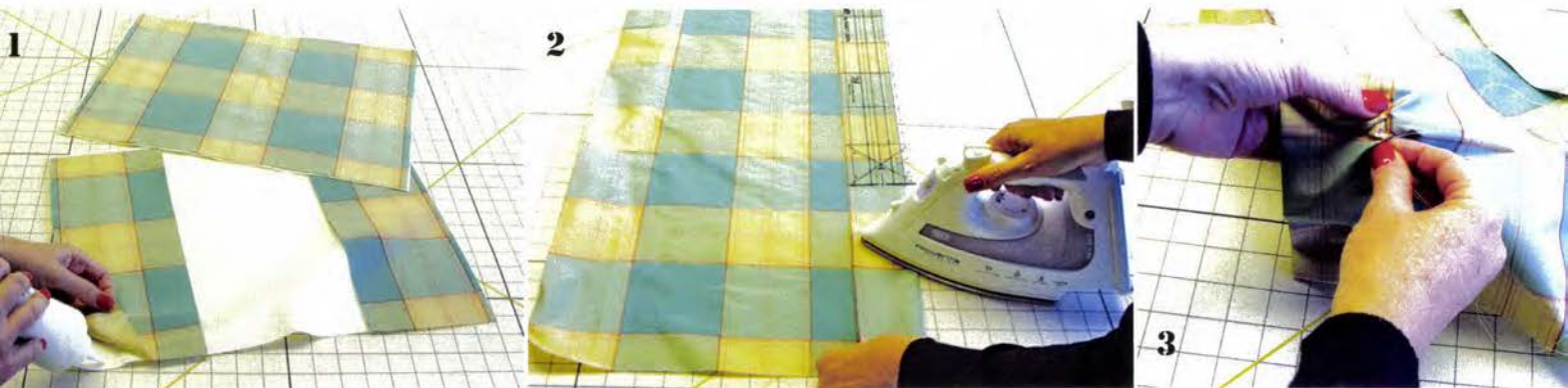
This pretty pillow features a gathered, ruffle edged panel inset on the pillow front with fringe. It could be made with a combination of prints and textures, such as a velvet pillow base with a silk or sheer ruffled panel.



## Material List:

- 1 1/2 yard fabric 54" wide
- 1/2 yard interlining or lining
  - 1 yard fringe or braid
- 1 pillow form 14" x 19"
- 2 yards 5/32" welt cord
  - Fringe Adhesive
- Needle and Thread

Hint: Pillow is made to finish 1" smaller than the form for a nice fill.



## Step-By-Step Instructions

1. Cut two pieces of lining or interlining 14" x 19".

2. Cut one piece of face material 14" x 19" and glue baste to one piece of the lining around the edges within the seam allowance (1/2").

3. Cut two pieces of face fabric 14 x 5 1/2" and glue baste to the outside ends of the other piece of lining within the seam allowance. Photo 1.

4. Cut one piece of face fabric 19" x 35", this will be the gathered center panel. Turn under each edge 2 1/2" and press. Photo 2.

5. Using a needle and thread, hand sew a gathering stitch along 2 1/2" inset from the folded edge of each side of the center panel, catching the raw edge that was folded under and the face fabric as you stitch. Photo 3. Use a long stitch for more full looking gathers.





6. Pull the stitched thread gathering up the fabric on both sides. Photo 4.

7. Continue to gather up each side and place on the pillow front, centering the ruffled edges and evening out the gathers. Pin in place. Photo 5.

8. Sew down the ruffled panel to the pillow front along the hand stitching. Photo 6.



9. Apply trim using the method of your choice. (Hand sewn, machine sewn or using a fringe adhesive). Photo 7.

10. Cut bias strips from remaining fabric and make welt cord. Sew around edges of pillow front, clipping corners and joining neatly. Photo 8.

11. Pin back to front and sew around edges getting close to welt

cord. Leave an opening and turn right sides out. Stuff pillow form inside pillow and hand sew closed. (A zipper or Velcro closure could also be used). Photo 9.



The same techniques can be used for a bolster style pillow. Photo 10. To make a bolster pillow with gathered ends allow enough width to cover the pillow and continue to the center of each end plus enough for a small casing. Follow steps for the pillow front from the previous instructions, adjusting cuts for your pillow size, then sew the edges together forming a tube. Press in a small hem or casing at each end, stitch, and stuff pillow form inside. Run a cord or ribbon through the casing and pull up each end into gathers.

Another bolster idea is to add circular ends to the bolster with welt cord. In this case leave an opening within the seam along the long edge, stuff the bolster and then hand sew the opening closed.

