

# SOFT FURNISHINGS DESIGNER BASIC: PATTERN REPEATS EXPLAINED

Rose Mary LeBlanc and Amanda Deal Smith



## SEAMLESS

WORKROOM

YOUR PATTERN TO SUCCESS



In this presentation we will explain the 4 basic pattern repeats – Block or Brick, Half Block or Half Brick, Alternating, and Half Drop.

It is essential to know not only the repeat size but the type of repeat to calculate yardage correctly. For instance Half Drop repeats require more fabric to pattern match than the other repeats.

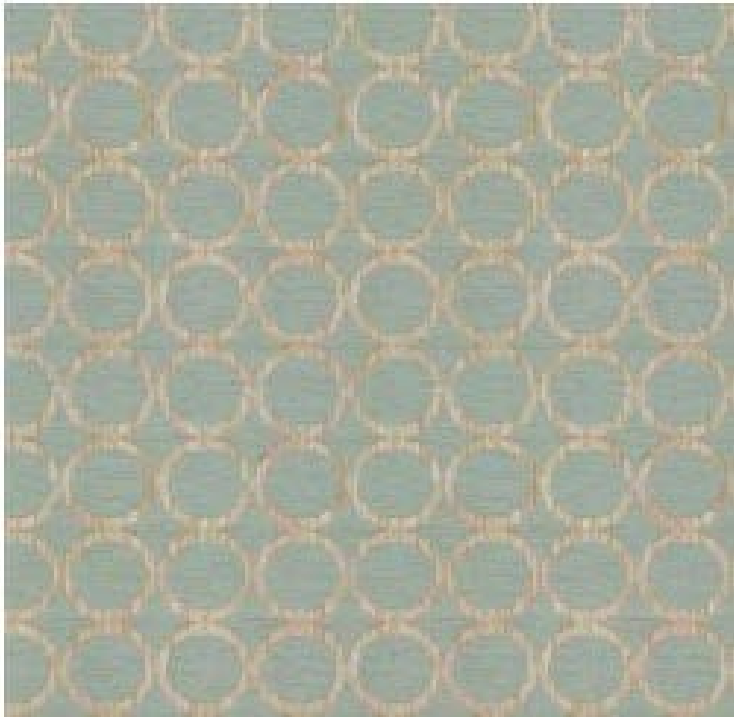
When requesting a quote from your workroom, remember to state the fabric company, style, color, and repeat size so that the workroom can search for an image of the fabric to correctly calculate yardage.

Glossary term: Pattern Match – to line up the pattern repeat so that it matches perfectly when sewing two cuts of fabric together.

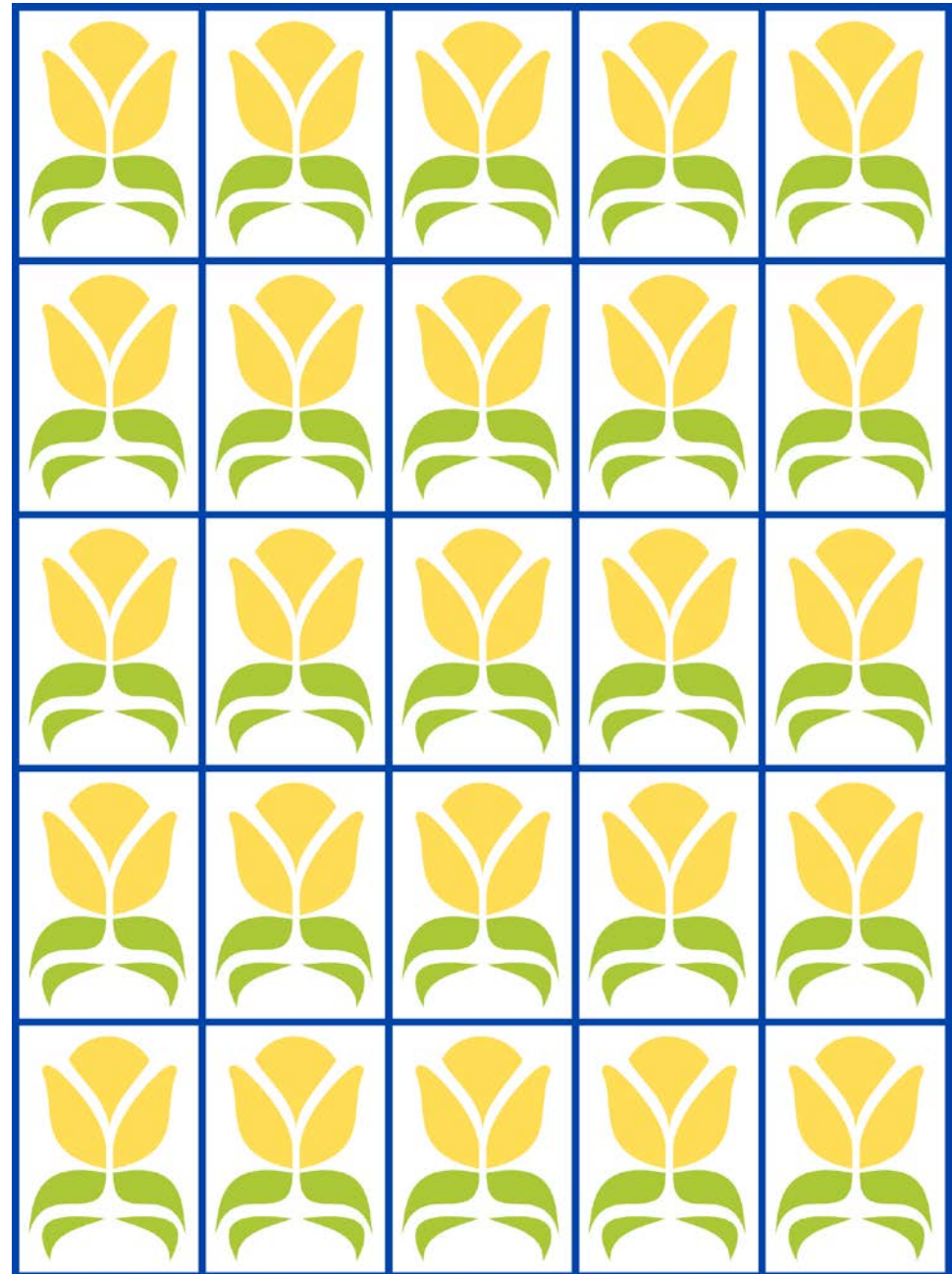
Fabric on cover slide – Waverly Charmed Life.

### **Block or Brick Repeat**

The repeat is lined up vertically and horizontally and is very easy to pattern match. The repeats may also flip upside down or mirror each other on alternating rows.



Calico Corner Jangle Silversage



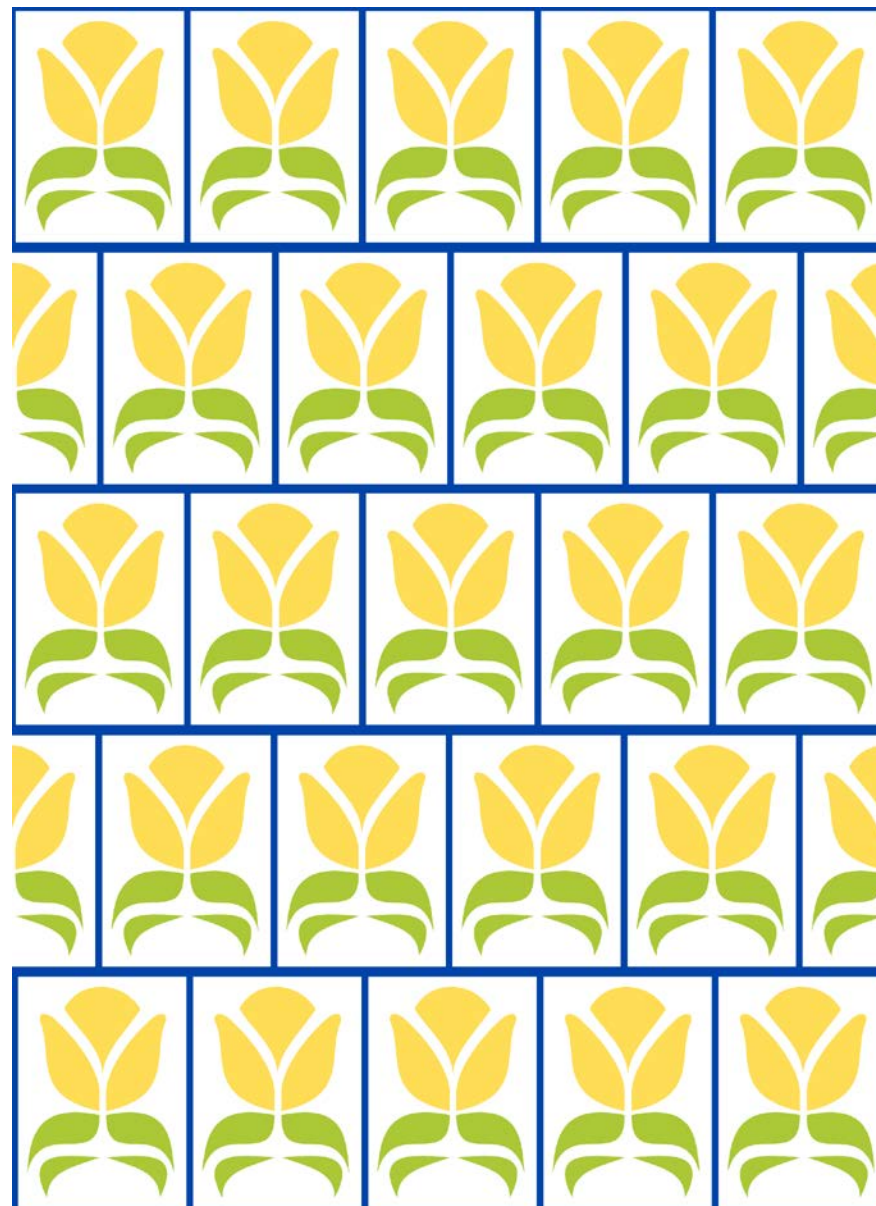


## Half Block or Half Brick

The pattern shifts side to side on alternating horizontal rows. The repeats may also flip upside down on alternating rows.



Premier Prints Isabella Slub Salmon



## Alternating Repeat

The pattern shifts up and down on alternating vertical rows. The repeats may also flip upside down on alternating rows.



HGTV Loose Leaf





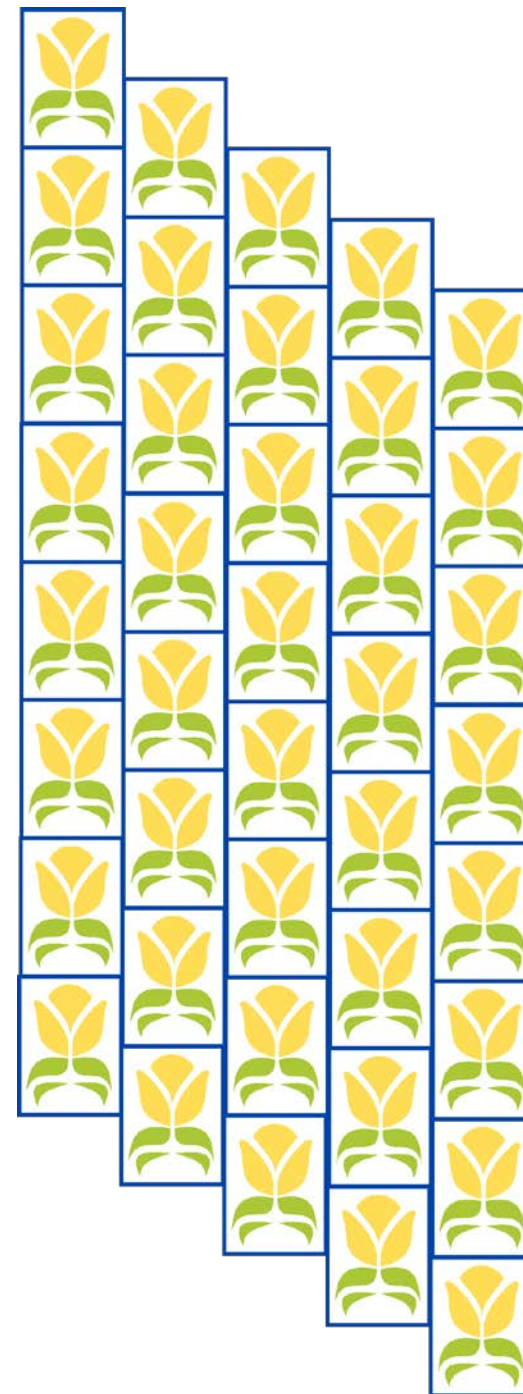
## Half Drop Repeat

The pattern steps down a half repeat on vertical rows the whole width of the fabric.

This diagram shows how the repeat steps down vertically a half repeat each horizontal row.

Half drops require more fabric than other repeats to match the pattern when seaming cut widths. They also tend to be large.

Toiles are an example of a half drop repeat.



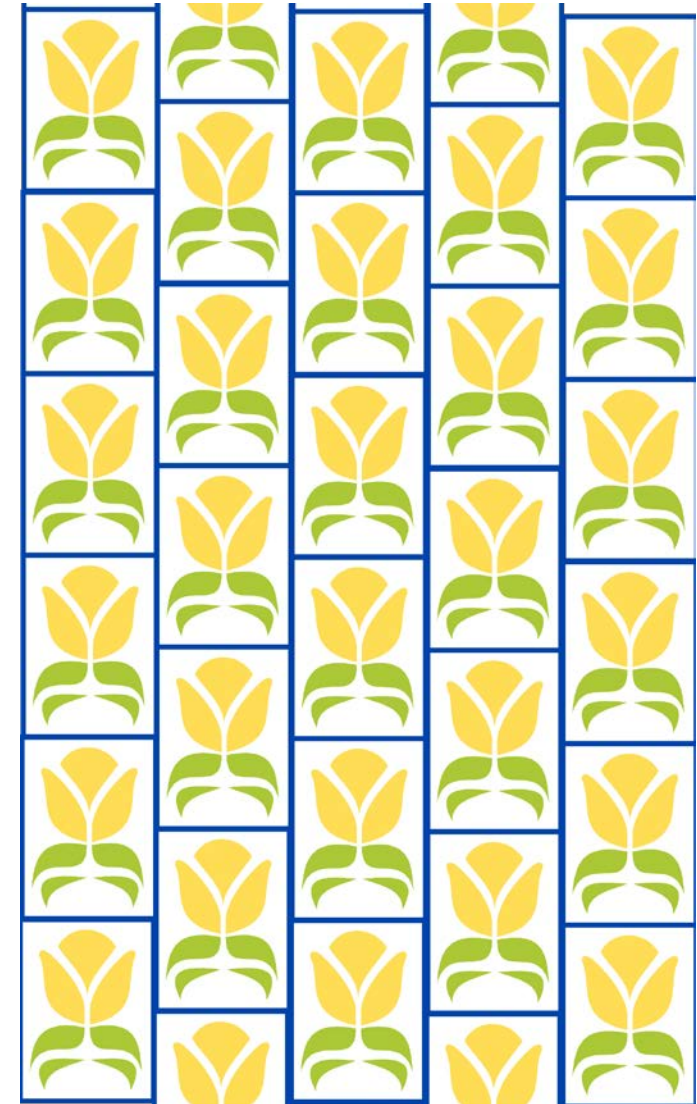
As you can see in this diagram, cut widths of the same length do not match up correctly for seaming. The width is a half pattern repeat off from matching.

An extra repeat is needed to properly pattern match.

When calculating yardage, it is essential to know if the repeat is a half drop or not.



### Half Drop Repeat





Schumacher Chang Mai Dragon  
Half Drop  
Horizontal 27"  
Vertical 45.5"





Thank you for viewing this presentation.

© Seamless Workroom LLC 2017

Seamless Workroom LLC

[www.seamlessworkroom.com](http://www.seamlessworkroom.com)

RML Custom Home Creations LLC

[www.rmlcustomhome.com](http://www.rmlcustomhome.com)

Sew Unordinary LLC

[www.sewunordinary.net](http://www.sewunordinary.net)



SEAMLESS

WORKROOM

YOUR PATTERN TO SUCCESS