

Create A Workroom Apron

By Holly Bucciarelli

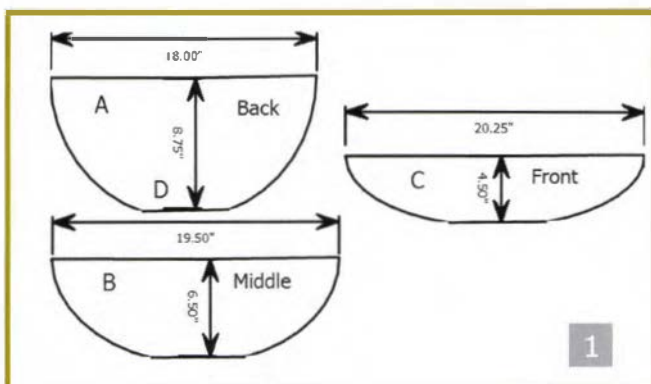
Nokomis, FL



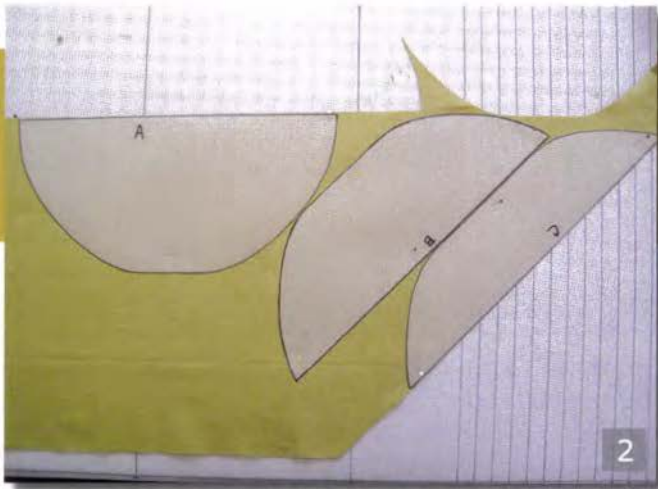
Tools and Supplies

- Heavy Duck Fabric (#8 or #10)
Hint: Recycle your old table canvas into aprons
- Heavy Duty Thread
- Brown Paper or Pattern Paper
- Sewing Machine
- Basic Sewing Supplies

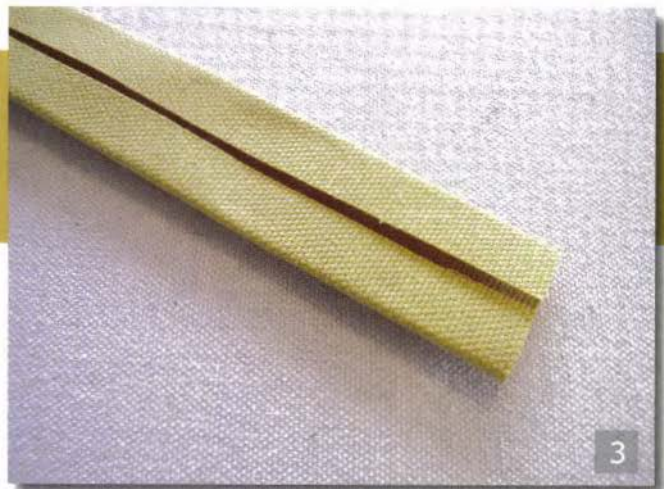
Having the right tools can be very important in being efficient and profitable in the workroom. My very first class at the Custom Home Furnishings Academy included a student handbook loaded with articles and information on how to do just that. Included in the handbook was an article called *The-I-Can't-Sew-Without-It Apron*, by Kitty Stein. I am so grateful to those with many years of experience who share their knowledge and expertise so willingly. My inspiration to write this article comes from the well known workroom consultant and writer, Kitty Stein. I still refer to this particular article and have since made dozens of aprons. As Kitty states, "My design is meant to be merely a springboard from which to create a custom design of your own." The following step-by-step instructions are based on Kitty's original article, but also include how I have customized it to work for me. With Kitty's permission, I have used the same basic design.



Create your basic pattern pieces using the following dimensions (as described in Kitty's article). Note that the bottom center edges are somewhat flattened.



Cut the BACK on the straight of the grain. Then, I like to cut the MIDDLE and FRONT pieces on the bias. The MIDDLE and FRONT are slightly wider to allow for extra room in the pockets. Cutting these two pockets on the bias will allow for a bit more stretch and it's also easier to ease in the fullness at the bottom when layering the pieces together.



For this step cut the following pieces on the STRAIGHT of grain:

- 19 1/2" x 2" to cover edge **B**
- 20 1/4" x 2" to cover edge **C**
- 66" x 2" to cover edge **A** and make the ties

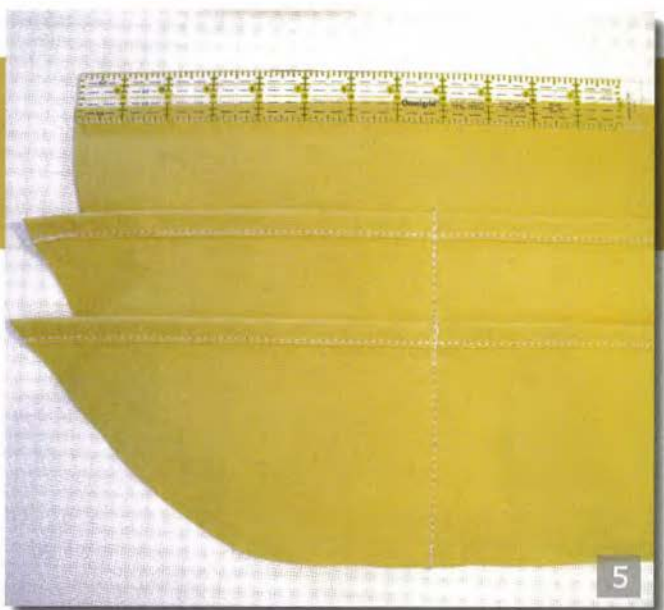
On the BIAS cut the following piece:

- 33" x 2" to cover edge **D**

Press the long rectangular pieces in half length wise, then bring the long cut edges to the crease and press again like you would a bias tape binding.



Cover the top edges of the FRONT and MIDDLE pieces with the long pieces described in step 2 and step 3 being careful not to stretch the bias edge.



Layer the three pieces together, aligning their centers and bottom edges. I start about 8" from the left side of the BACK apron section, (when looking at the apron), and sew all pieces together, back tacking, as shown in photo 5.



Start by choosing your favorite tools that you want to have handy. Place the first tool in its desired location, allowing for enough ease so you know it will fit, and then stitch alongside it.

Continue placing items and stitching around them until you reach the outside edge.

Align the outside edges of the FRONT and MIDDLE sections to the BACK section. Pin or stitch in place, along the edge, easing in fullness on FRONT and MIDDLE sections to match the BACK section. Trim off excess if necessary.



Now, work toward the other side of the apron in the same manner. Again, folding back parts of the apron and stitching to achieve the desired result. Align the edges of the FRONT and MIDDLE sections with the BACK section. Pin or stitch in place, along the edge, easing in fullness on FRONT and MIDDLE sections to match the BACK section.



Cover the bottom curved edge with the 33" bias strip and stitch.

Place the 66" piece along the top edge of the BACK section, matching center. Stitch along the edge of the folded strip as you would bias tape, enclosing the top edge of the BACK section. I have shown the back of the apron, in Picture 14, so that you can see how it has been stitched to accommodate the various size items. The finished apron holds: two pairs of scissors, small clippers, 6" ruler, fractional calculator, disappearing pen, fabric eraser, leather thimble, chalk markers, pointed turning tool, finger pressing tool, and pencils.